

YEAR 9  
CLASS 90



# SUMMER REVISION LIST 2025

**Our Lady of Lourdes School Ballymoney**

Caring, Sharing, Learning together to meet the future

Castle Street, Ballymoney County Antrim BT53 6JX



028 2766 2050



[www.ourladyoflourdesballymoney.com](http://www.ourladyoflourdesballymoney.com)



# 90 SUMMER EXAMINATION TIMETABLE 2025

NAME: _____	1	2	3	4	5	7	8	9
<b>MONDAY</b> 26th MAY 2025	SPRING ↔		BANK ↔			HOLIDAY ↔		
<b>TUESDAY</b> 27th MAY 2025		SCIENCE ↔						MUSIC ↔
<b>WEDNESDAY</b> 28th MAY 2025	ENGLISH ↔				FRE/IRISH ↔	HE/TECHNOLOGY ↔		
<b>THURSDAY</b> 29th MAY 2025	90 GEOG ↔			MATHS ↔				HIST ↔
<b>FRIDAY</b> 30th MAY 2025	RE ↔	SCIENCE ↔						



## English

### Mrs McAleese

#### Writing Section

##### **Creative Writing**

- Use accurate spelling, punctuation and grammar
- Organise your writing into paragraphs (TiPToP)
- Stretch your vocabulary - use wow words and best words to describe. Use a range of techniques to enhance your writing, e.g. a triad of adjectives, repetition, simile etc.
- Vary your sentence structures - short sentences and long sentences.
- Vary your paragraph length - short and long paragraphs.
- Push punctuation - use ellipsis, brackets.
- Proof read - read over your work and check for mistakes.

#### Reading Section

##### **P.E.E.T**

- Read the passage carefully.
- Read questions.
- Use relevant words and phrases (evidence) to support your points.
- Explain help words - this shows/this tells us/this creates/emphasises/suggests.
- HOW/EXPLAIN questions demand a detailed response. Make your point, evidence it, explain what the author is doing and identify the technique. This question is a challenging question and an extended answer is required.



## Maths

### Mr Forrest/Mr Mullan

#### Order of Operations

- Applying the order of operations including brackets (BODMAS)

#### Statistical Averages

- Mean, median, mode and range

#### Equations

- Solving one step and two step equations

#### Perimeter, Area and Volume

- Calculating the perimeter and area of rectangles and triangle
- Calculating the volume of cubes and cuboids

#### Probability

- Writing down the probability of an event happening.
- Writing down the probability of an event not happening.
- Working out a missing probability
- Completing sample space diagrams and listing probabilities.



#### Ratio

- Ratio notation, including writing a ratio in its simplest form
- Calculating equivalent ratios
- Using equivalent ratios to calculate amounts in a variety of situations




<b><u>Science</u></b>	<b><u>Chemistry</u></b> <ol style="list-style-type: none"><li>1. Safety Rules in the Lab</li><li>2. Hazard Symbols and their meanings</li><li>3. Lab Equipment – what does it look like and what is it used for?</li><li>4. Natural and man-made materials – what are they and be able to name examples of each.</li><li>5. Name the 3 states of Matter: solids, liquids, and gases.</li><li>6. Acids &amp; Alkalis</li><li>7. Materials</li><li>8. Periodic Table</li></ol>
<b><u>Art</u></b>	<p>Assessment 1: Clay Pop Art Cake - marked out of 10</p> <p>Assessment 2: Observational Drawing of a Sweet Wrapper - marked out of 10</p> <p>Assessment 3: Logo Design - marked out of 10</p> <p>All three assessments are completed throughout the carousel and will be totalled together (out of 30) to create a percentage and grade for the summer report.</p>
<b><u>HE</u></b>	<p><b><u>Year 9 HE Revision</u></b></p> <p>Identify and explain 2 personal hygiene rules</p> <p>Identify and explain 2 Health &amp; Safety Rules</p> <p>Be able to list common accidents in the home / methods of prevention</p> <p>Diet Related Disorders - What is CHD? Main Causes / Methods of Prevention</p> <p>What is Diabetes? Main Causes / Methods of Prevention</p>



	<p>What is Osteoporosis? Main Causes / Methods of Prevention</p> <p>Ways to look after your teeth / Methods of Prevention</p>
<p><b>Technology</b></p> 	<p>Students will be assessed on their practical work which they have completed on their <b>Night light</b> from the beginning of the carousel. Students will also be assessed on their CAD drawings and the effective use of the Pro desktop package.</p> <p><b><u>Students will be assessed:</u></b></p> <ul style="list-style-type: none"> <li>● On their creative night light designs.</li> <li>● On their competency of using hand tools and machines in a safe manner and adhering to the workshop rules.</li> <li>● On their ability to accurately mark out their nightlight stand and shape it using the finisher</li> <li>● Accurately soldering all the electronic components onto their nightlight.</li> <li>● CAD - Accurately complete CAD stencil and convert 2D to 3D.</li> </ul>
<p><b><u>RE</u></b></p> 	<ul style="list-style-type: none"> <li>● Purpose of having The Ten Commandments? [page 53]</li> <li>● Opinions on role of rules [page 53]</li> <li>● Examples of moral choices you have to make</li> <li>● What helps you figure out good and bad? [Page 59/60]</li> <li>● What happens if you ignore your conscience?</li> <li>● Influences on our conscience?</li> <li>● What helps our conscience to grow? [page 62 /63]</li> <li>● Definition of sin [page 64]</li> </ul>



	<ul style="list-style-type: none"><li>● 3 factors that determine sin [page 66]</li><li>● Worst type of sin [page 66]</li></ul> <p><b><u>Use your exercise books/class materials and the The Fully Alive 2 textbook which is on Google Classroom: the class code is <a href="#">3rlcfqe</a>.</u></b></p>
<p><b><u>French</u></b></p> 	<p><b><u>Reading</u></b></p> <ul style="list-style-type: none"><li>● Personal Details reading passage including age, birthday and family sentences</li><li>● Days and Months/Dates</li><li>● Numbers 1-50</li><li>● Parts of the Body</li><li>● Illnesses</li><li>● Weather phrases</li></ul> <p><b><u>Listening Assessment</u></b> in normal class time on Dates and Parts of the Body.</p>
<p><b><u>Irish</u></b></p>	<ul style="list-style-type: none"><li>● Family</li><li>● Feelings</li><li>● School/Classroom/Subjects//Hobbies</li><li>● Pets</li><li>● Days/ Months/Time</li></ul>
<p><b><u>History</u></b></p>	<p><b><u>Spanish Armada</u></b></p> <ol style="list-style-type: none"><li>1. Philip II of Spain and Elizabeth I England Fact Files</li><li>2. Story of the Armada: What happened on the way to England, during the battle and on the way back to Spain</li><li>3. Route of the Spanish Armada</li><li>4. Life on board the Armada</li><li>5. Reasons why the Armada failed: Use PEE structure to answer this question</li></ol>

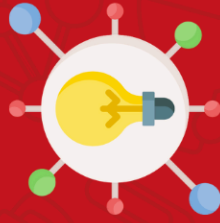


<u><b>Geography</b></u>	<p><u><b>Miss Donnelly</b></u></p> <p><b>POPULATION:</b></p> <p>Know the key terms: population density, migration, immigration, emigration, push and pull factors.</p> <p>Know the definition of rural-urban migration.</p> <p>Know the advantages and disadvantages that migrants bring to the country they move to.</p> <p><b>WEATHERING and EROSION:</b></p> <p>Know the difference between weathering and erosion.</p> <p>Know how to describe the different types of weathering: freeze-thaw, onion-skin, chemical and biological.</p> <p>Know the features of a limestone cave and be able to label these on a diagram (stalactites, stalagmites, pillar, cave).</p> <p><b>COASTS:</b></p> <p>Know why coasts are important to many people- different uses of the coast.</p> <p>Be able to give examples of coastal areas in N. Ireland.</p>
<u><b>Music</b></u>	Practical Keyboard Assessment in class.





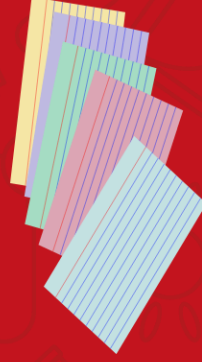
Mind Maps



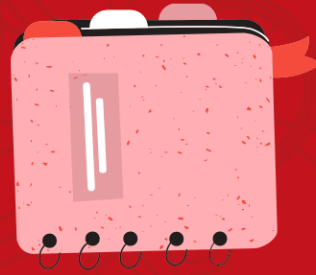
YouTube



Flash Cards



Post it notes



Planning



mnemonics



Past Papers



Websites



Keywords



Booster Classes